

### Average daily expenditure (€)

#### BOOK HOLIDAY PACKAGE

	LZ	FV	GC	TF	LP	CANARIAS
<b>Package:</b>	138.2	110.0	122.0	112.8	111.9	<b>120.7</b>
<b>Accommodation:</b>	0.3	0.6	2.1	0.8	0.2	<b>1.1</b>
- Accommodation	--	--	--	--	--	--
- Additional accommodation e)	0.3	0.6	2.1	0.8	0.2	<b>1.1</b>
<b>Transport:</b>	3.1	2.8	2.9	3.7	6.6	<b>3.2</b>
- National/international transp	--	--	--	--	--	--
- Local transport	3.1	2.8	2.9	3.7	6.6	<b>3.2</b>
<b>Food and drink:</b>	16.3	8.8	20.5	23.6	15.6	<b>18.5</b>
- Food purchases at supermark	4.7	2.9	6.8	7.3	4.5	<b>5.8</b>
- Restaurants / cafes	11.6	5.9	13.7	16.3	11.1	<b>12.7</b>
<b>Leisure, culture and sports:</b>	5.4	2.7	4.4	6.6	2.7	<b>5.0</b>
<b>Shopping:</b>	5.2	3.1	5.2	6.4	4.1	<b>5.2</b>
<b>Others:</b>	0.3	0.5	0.5	0.6	0.5	<b>0.5</b>
<b>TOTAL</b>	<b>168.8</b>	<b>128.5</b>	<b>157.4</b>	<b>154.7</b>	<b>141.6</b>	<b>154.2</b>

#### DO NOT BOOK HOLIDAY PACKAGE

	LZ	FV	GC	TF	LP	CANARIAS
<b>Package:</b>	--	--	--	--	--	--
<b>Accommodation:</b>	40.9	45.6	38.3	31.1	30.8	<b>36.0</b>
- Accommodation	39.1	44.6	36.3	30.0	30.6	<b>34.5</b>
- Additional accommodation e)	1.8	1.0	2.0	1.1	0.2	<b>1.5</b>
<b>Transport:</b>	43.6	35.4	40.7	37.8	42.2	<b>39.5</b>
- National/international transp	38.3	27.9	35.1	31.9	32.3	<b>33.6</b>
- Local transport	5.3	7.5	5.6	5.8	9.9	<b>5.9</b>
<b>Food and drink:</b>	25.2	19.4	28.7	23.3	19.0	<b>24.8</b>
- Food purchases at supermark	7.5	6.4	10.6	9.5	7.4	<b>9.2</b>
- Restaurants / cafes	17.8	13.0	18.1	13.8	11.7	<b>15.6</b>
<b>Leisure, culture and sports:</b>	5.2	4.4	4.8	6.1	3.4	<b>5.4</b>
<b>Shopping:</b>	4.7	7.0	7.1	4.4	4.3	<b>5.4</b>
<b>Others:</b>	0.5	0.8	0.7	0.5	0.5	<b>0.6</b>
<b>TOTAL</b>	<b>120.1</b>	<b>112.6</b>	<b>120.3</b>	<b>103.2</b>	<b>100.3</b>	<b>111.6</b>

### Expenditure per tourist and trip (€)

#### BOOK HOLIDAY PACKAGE

	LZ	FV	GC	TF	LP	CANARIAS
<b>Package:</b>	1,041	923	1,011	876	933	<b>965</b>
<b>Accommodation:</b>	2	4	15	8	1	<b>8</b>
- Accommodation	--	--	--	--	--	--
- Additional accommodation e)	2	4	15	8	1	<b>8</b>
<b>Transport:</b>	24	23	22	27	54	<b>25</b>
- National/international transp	--	--	--	--	--	--
- Local transport	24	23	22	27	54	<b>25</b>
<b>Food and drink:</b>	128	72	179	195	130	<b>154</b>
- Food purchases at supermark	36	25	57	67	38	<b>50</b>
- Restaurants / cafes	91	47	122	128	92	<b>104</b>
<b>Leisure, culture and sports:</b>	40	23	33	51	23	<b>38</b>
<b>Shopping:</b>	40	24	39	48	38	<b>40</b>
<b>Others:</b>	3	4	5	4	6	<b>4</b>
<b>TOTAL</b>	<b>1,278</b>	<b>1,074</b>	<b>1,305</b>	<b>1,209</b>	<b>1,184</b>	<b>1,235</b>

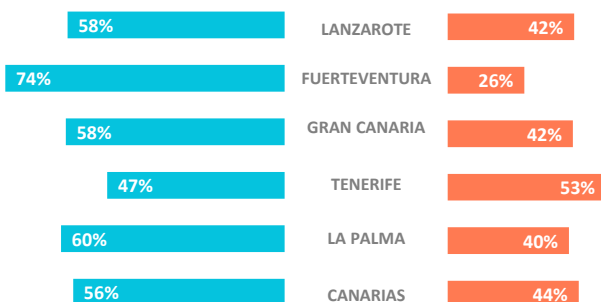
#### DO NOT BOOK HOLIDAY PACKAGE

	LZ	FV	GC	TF	LP	CANARIAS
<b>Package:</b>	--	--	--	--	--	--
<b>Accommodation:</b>	338	360	334	264	308	<b>305</b>
- Accommodation	324	350	316	255	306	<b>293</b>
- Additional accommodation e)	14	10	19	9	2	<b>13</b>
<b>Transport:</b>	324	264	314	303	392	<b>309</b>
- National/international transp	282	206	269	255	293	<b>261</b>
- Local transport	42	58	45	48	99	<b>48</b>
<b>Food and drink:</b>	201	157	241	215	190	<b>215</b>
- Food purchases at supermark	65	56	101	93	75	<b>88</b>
- Restaurants / cafes	136	101	139	122	114	<b>127</b>
<b>Leisure, culture and sports:</b>	39	34	39	47	31	<b>42</b>
<b>Shopping:</b>	35	54	50	36	39	<b>41</b>
<b>Others:</b>	4	7	12	4	4	<b>7</b>
<b>TOTAL</b>	<b>941</b>	<b>876</b>	<b>990</b>	<b>869</b>	<b>963</b>	<b>919</b>

### SHARE OF TOURISTS: PACKAGE VS. NO PACKAGE



VS.



### Length of stay \*

	LZ	FV	GC	TF	LP	CANARIAS
Book holiday package	7.6	8.4	8.3	7.8	8.4	<b>8.0</b>
Do not book holiday package	7.8	7.8	8.2	8.4	9.6	<b>8.2</b>
<b>TOTAL</b>	<b>8.2</b>	<b>8.8</b>	<b>9.4</b>	<b>9.3</b>	<b>9.5</b>	<b>9.1</b>

\* Estimation

### Tourists (> 16 years old)

	LZ	FV	GC	TF	LP	CANARIAS
Book holiday package	376,273	343,438	624,392	639,419	36,987	<b>2,044,638</b>
Do not book holiday package	274,325	117,811	447,040	713,642	25,099	<b>1,583,787</b>
<b>TOTAL</b>	<b>650,598</b>	<b>461,249</b>	<b>1,071,432</b>	<b>1,353,061</b>	<b>62,086</b>	<b>3,628,425</b>

### Tourist turnover\* (€ million)

	LZ	FV	GC	TF	LP	CANARIAS
Book holiday package	481	369	815	773	44	<b>2,525</b>
Do not book holiday package	258	103	443	620	24	<b>1,456</b>
<b>TOTAL</b>	<b>739</b>	<b>472</b>	<b>1,258</b>	<b>1,393</b>	<b>68</b>	<b>3,980</b>

\* Estimation

# Tourist Expenditure Survey (4th Quarter 2018)

## Main indicators by source markets



### Average daily expenditure (€)

#### BOOK HOLIDAY PACKAGE

	Germany	Spain	Nordics	UK	Total
<b>Package:</b>	119.9	127.2	128.3	117.9	<b>120.7</b>
<b>Accommodation:</b>	0.4	0.9	2.0	1.1	<b>1.1</b>
- Accommodation	--	--	--	--	--
- Additional accommodation ex)	0.4	0.9	2.0	1.1	<b>1.1</b>
<b>Transport:</b>	3.7	8.1	1.9	2.2	<b>3.2</b>
- National/international transp	--	--	--	--	--
- Local transport	3.7	8.1	1.9	2.2	<b>3.2</b>
<b>Food and drink:</b>	11.7	16.7	26.8	21.5	<b>18.5</b>
- Food purchases at supermark	4.7	2.8	8.3	6.6	<b>5.8</b>
- Restaurants / cafes	7.1	13.9	18.5	14.8	<b>12.7</b>
<b>Leisure, culture and sports:</b>	4.7	8.9	3.2	5.7	<b>5.0</b>
<b>Shopping:</b>	3.8	8.8	3.8	5.5	<b>5.2</b>
<b>Others:</b>	0.4	0.8	0.4	0.5	<b>0.5</b>
<b>TOTAL</b>	<b>144.7</b>	<b>171.4</b>	<b>166.6</b>	<b>154.4</b>	<b>154.2</b>

#### DO NOT BOOK HOLIDAY PACKAGE

	Germany	Spain	Nordics	UK	Total
<b>Package:</b>	--	--	--	--	--
<b>Accommodation:</b>	33.1	30.1	38.1	37.4	<b>36.0</b>
- Accommodation	32.7	28.9	36.0	35.9	<b>34.5</b>
- Additional accommodation ex)	0.4	1.3	2.1	1.5	<b>1.5</b>
<b>Transport:</b>	37.0	39.3	40.5	38.9	<b>39.5</b>
- National/international transp	29.9	30.2	36.7	35.0	<b>33.6</b>
- Local transport	7.1	9.1	3.9	4.0	<b>5.9</b>
<b>Food and drink:</b>	20.7	20.4	32.1	27.5	<b>24.8</b>
- Food purchases at supermark	8.7	6.8	13.0	8.9	<b>9.2</b>
- Restaurants / cafes	12.1	13.6	19.1	18.6	<b>15.6</b>
<b>Leisure, culture and sports:</b>	3.9	5.5	3.1	6.5	<b>5.4</b>
<b>Shopping:</b>	4.3	6.3	5.8	4.3	<b>5.4</b>
<b>Others:</b>	0.2	0.9	0.2	0.6	<b>0.6</b>
<b>TOTAL</b>	<b>99.2</b>	<b>102.6</b>	<b>119.8</b>	<b>115.2</b>	<b>111.6</b>

### Expenditure per tourist and trip (€)

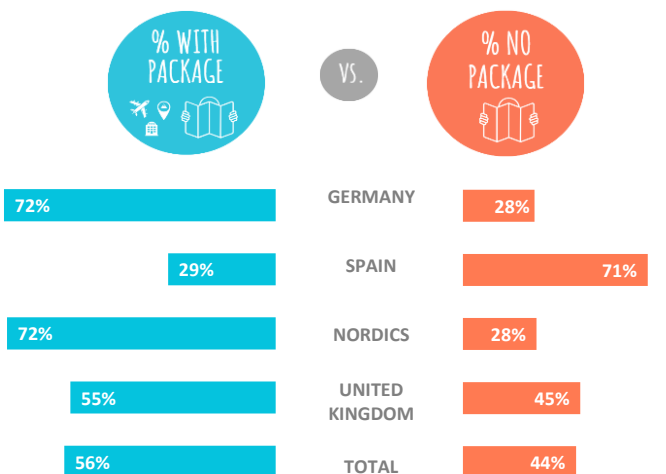
#### BOOK HOLIDAY PACKAGE

	Germany	Spain	Nordics	UK	Total
<b>Package:</b>	1,051	825	1,067	904	<b>965</b>
<b>Accommodation:</b>	4	5	16	10	<b>8</b>
- Accommodation	--	--	--	--	--
- Additional accommodation ex)	4	5	16	10	<b>8</b>
<b>Transport:</b>	32	49	15	17	<b>25</b>
- National/international transp	--	--	--	--	--
- Local transport	32	49	15	17	<b>25</b>
<b>Food and drink:</b>	112	103	241	171	<b>154</b>
- Food purchases at supermark	47	19	74	52	<b>50</b>
- Restaurants / cafes	64	84	168	118	<b>104</b>
<b>Leisure, culture and sports:</b>	42	57	24	41	<b>38</b>
<b>Shopping:</b>	32	57	30	41	<b>40</b>
<b>Others:</b>	4	5	5	3	<b>4</b>
<b>TOTAL</b>	<b>1,276</b>	<b>1,100</b>	<b>1,399</b>	<b>1,187</b>	<b>1,235</b>

#### DO NOT BOOK HOLIDAY PACKAGE

	Germany	Spain	Nordics	UK	Total
<b>Package:</b>	--	--	--	--	--
<b>Accommodation:</b>	382	192	393	305	<b>305</b>
- Accommodation	371	184	375	293	<b>293</b>
- Additional accommodation ex)	11	8	18	12	<b>13</b>
<b>Transport:</b>	382	227	382	286	<b>309</b>
- National/international transp	301	175	342	257	<b>261</b>
- Local transport	81	52	39	30	<b>48</b>
<b>Food and drink:</b>	229	137	321	218	<b>215</b>
- Food purchases at supermark	103	58	136	75	<b>88</b>
- Restaurants / cafes	126	78	185	143	<b>127</b>
<b>Leisure, culture and sports:</b>	43	34	32	48	<b>42</b>
<b>Shopping:</b>	36	42	46	32	<b>41</b>
<b>Others:</b>	5	8	2	6	<b>7</b>
<b>TOTAL</b>	<b>1,077</b>	<b>640</b>	<b>1,176</b>	<b>894</b>	<b>919</b>

### SHARE OF TOURISTS: PACKAGE VS. NO PACKAGE



### Length of stay\*

	Germany	Spain	Nordics	UK	Total
Book holiday package	8.8	6.4	8.4	7.7	<b>8.0</b>
Do not book holiday package	10.9	6.2	9.8	7.8	<b>8.2</b>
<b>TOTAL</b>	<b>10.4</b>	<b>7.6</b>	<b>9.8</b>	<b>8.4</b>	<b>9.1</b>

\* Estimation

### Tourists (> 16 years old)

	Germany	Spain	Nordics	UK	Total
Book holiday package	553,854	96,041	359,086	623,045	<b>2,044,638</b>
Do not book holiday package	211,354	238,689	142,540	515,514	<b>1,583,787</b>
<b>TOTAL</b>	<b>765,208</b>	<b>334,730</b>	<b>501,626</b>	<b>1,138,559</b>	<b>3,628,425</b>

### Tourist turnover\* (€ million)

	Germany	Spain	Nordics	UK	Total
Book holiday package	707	106	502	740	<b>2,525</b>
Do not book holiday package	228	153	168	461	<b>1,456</b>
<b>TOTAL</b>	<b>934</b>	<b>258</b>	<b>670</b>	<b>1,201</b>	<b>3,980</b>

\* Estimation

Source: ISTAC (Encuesta sobre el Gasto Turístico).

Note: Tourists under 16 years old are excluded.